



IMMERSION BLENDER XM-52 230/50-60/1 AUS

Professional immersion blender. 570 W.

P/N 3030840



- demanding usage tests.
- ✓ Studied geometry: casing designed to avoid rolling and falling.
- ✓ Ultra-durable arms designed to stand high temperatures in operation.
- ✓ Easy to clean: the arm can be washed under the tap or in the dishwasher.
- ✓ Approved by NSF: guaranteed safety and hygiene.

INCLUDES

- ✓ Fixed speed motor block.
- ✓ MA-52 mixer arm.
- ✓ Wall mount.

OPTIONAL

- ☐ MA-51 mixer arm.
- ☐ "Quick fix" clamp.
- ☐ Clamp sliding frame.

ACCESSORIES

- ☐ Clamp sliding frame
- ☐ Motor unit MM-50
- ☐ Mixer arms MA-50
- ☐ Quick-Fix bowl clamp

SALES DESCRIPTION

- ✓ Fixed speed motor block.
- ✓ 525 mm detachable arm.
- ✓ Designed for continuous use in recipients of up to 120 l.

All-in-one

- ✓ Professional hand blender designed for carrying out different preparations without the need for add-on tools.
- ✓ Professional Y-blade, made from tempered steel and with a long-duration cutting edge.
- ✓ Fixed speed.
- ✓ Designed to work in recipients of up to 120 l.

Exclusive TiltStop system

- ✓ Your hand blender will stop in case of a fall or excessive tilt from the vertical position.
- ✓ Moreover, it won't initiate unless it's in the correct usage position.
- ✓ This ensures optimal operation and increases the operator's safety at the workplace.

Maximum comfort for the user

- ✓ Compact design: logical and manageable size.
- ✓ Ergo-design & bi-mat-grip: external casing made in two materials for an ergonomic hold. Anti-slip grip. Optimum inclination of handle, minimising fatigue.
- ✓ Click-on-arm: detachable arm with fast and secure closure.
- ✓ Hood designed to avoid splashes.
- ✓ Intuitive use: very simple operation. LED warning light in two colours to indicate the status of the machine.
- ✓ Possibility of continuous operation.

Built to last

- ✓ Professional performance: capable of carrying out prolonged work without the casing overheating.
- ✓ Life-plus: equipped with a motor which has passed all of the most

SPECIFICATIONS

Total loading: 570 W
Maximum recipient capacity: 120 l
Maximum working depth: 350 mm
Motor speed: 12000 rpm
Blade diameter: 60 mm
Blade guard diameter: 101 mm
Electrical supply: 230 V / 50-60 Hz / 1~ (3.2 A)
Plug: AU/NZ (AS 3112 10A / 2P)

Length

Liquidising arm length: 525 mm
Total length: 865 mm

Net weight: 4.85 kg
Noise level (1m.): <80 dB(A)

Crated dimensions
575 x 455 x 130 mm
Gross weight: 6.37 kg



DYNAMIC PREPARATION
COMMERCIAL HAND BLENDERS



International Dysphagia Diet
Standardisation Initiative
GOLD SPONSOR

product sheet
updated 03/02/2025



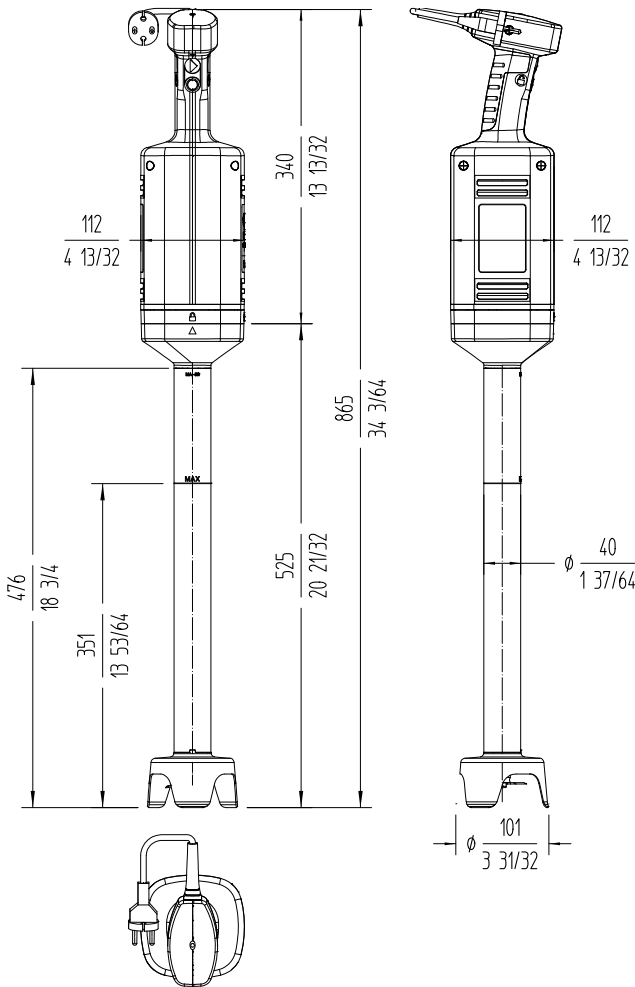
IMMERSION BLENDER XM-52 230/50-60/1 AUS

Professional immersion blender. 570 W.



P/N 3030840

DYNAMIC PREPARATION
COMMERCIAL HAND BLENDERS



sammic | www.sammic.com
Food Service Equipment Manufacturer

Polígono Basarte, 1.
20720 Azkoitia, Spain

phone +34 943 15 72 36
sales@sammic.com



Project	Date
Item	Qty
Approved	

product sheet
updated 03/02/2025